



Alexander Mountain

(IRWIN ID: 97ce5503-be6c-4246-a0aa-3532f9a3417b)

Incident Decision

Published

May 15th, 2025 (11:25 CDT)

Approved By:

Sarah Synowiec (05/15/2025 11:25:49)





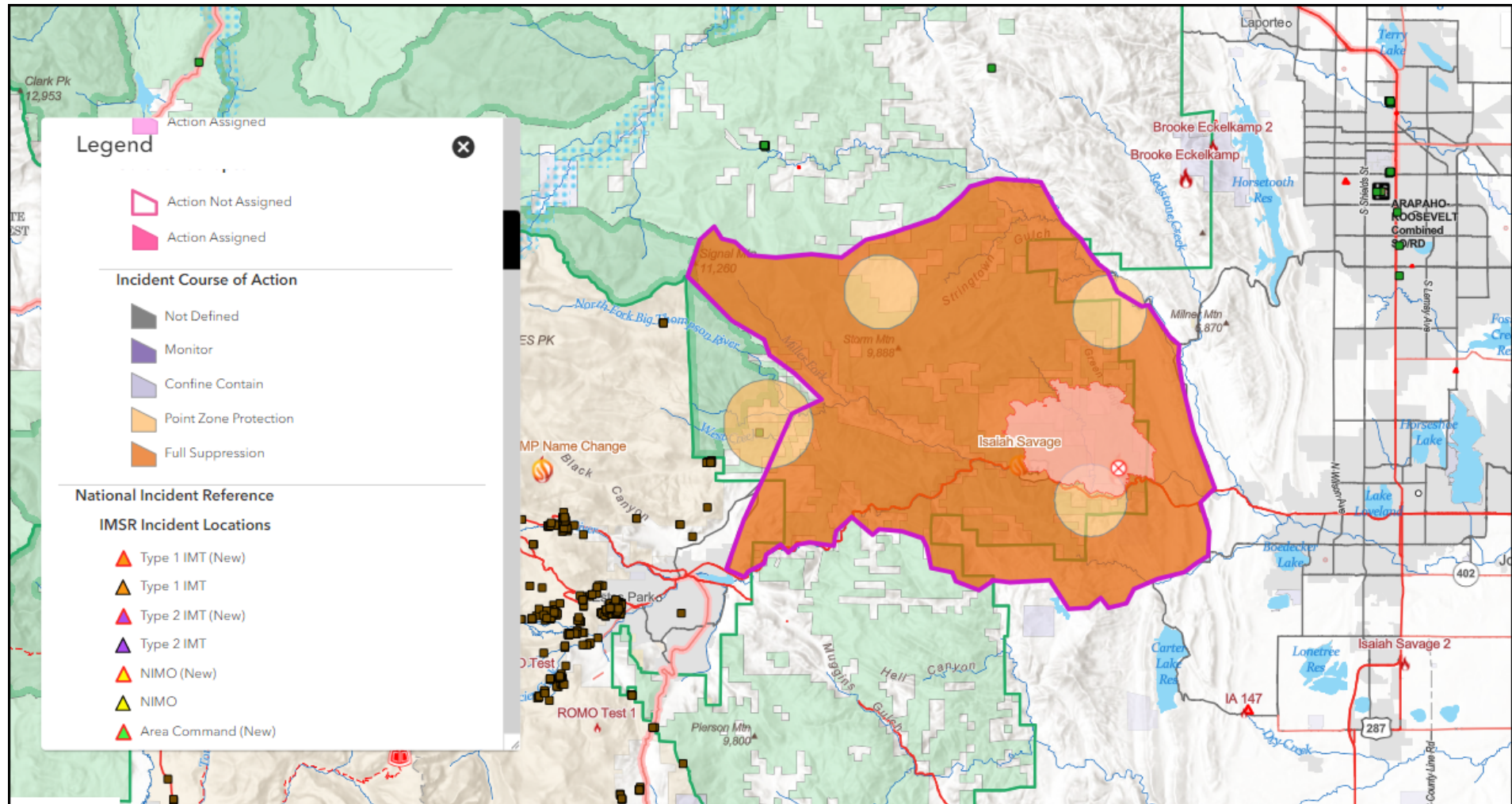
Table of Contents

1. Decision Rationale
2. Strategic Summary
3. Relative Risk PMS-236 - Part B (Summary)
4. Strategic Assessment
5. Estimated Final Incident Cost
6. Organizational Assessment PMS-236 - Part C/D
7. Appendix A: Unit Fire Planning Information



1. Decision Rationale

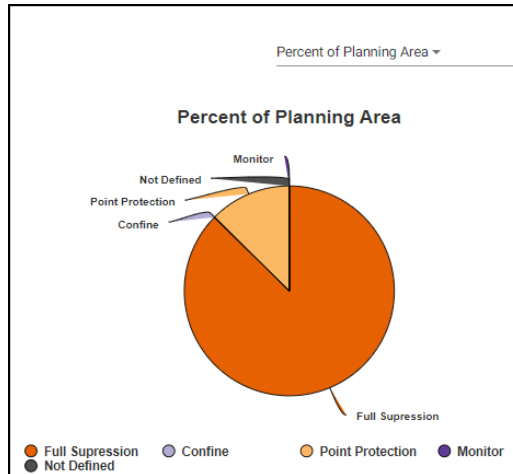
My leader's intent is....



My Decision is for a full suppression action and have ordered a CIMT. The current objectives may be achievable but based on current and predicted fire activity, objectives may change and probability of success may decrease. The duration of this incident will likely be long duration, requiring multiple CIMT's. The cooperators involved in sharing this decision process are Larimer County, And DFPC. The values of concern are private property along numerous foothill communities, county infrastructure, city of Loveland water treatment plant, fiber optic cables along Hwy 34, Excel energy gas line between pole hill and Estes



Park, Northern water infrastructure near the Big Thompson canyon and CR29, and Sylvan Dale guest ranch. The values have high importance to the local communities and there is a high likelihood of negative impacts without suppression actions. The relative risk assessment and organization needs indicate that we need to a CIMT, relative risk is high, hazards high, values high, and probability moderate. The current fire situation is 5080 acres and growing. Fuels are dry and terrain is steep with limited access.



Decision Update Triggers

The following triggers would indicate revisions to this decision include, fire behavior beyond what was modeled and costs beyond what was initially estimated, and significant changes from additional on the ground assessment.



2. Strategic Summary

Reported to IRWIN – N/A

Last IRWIN reported Strategy Source: N/A Date & Time: N/A

Strategies	WFDSS Reported	IRWIN Reported
Monitor	0%	N/A
Confine	0%	N/A
Point Zone Protection	0%	N/A
Full Suppression	100%	N/A
note		

Strategic COA Name	Strategy	Feature Layer	Feature Name
3rd	Monitor	User Defined Course of Action Shapes	1
communities	Point Zone Protection	User Defined Course of Action Shapes	communities



Strategic COA Name	Strategy	Feature Layer	Feature Name
08012024	Full Suppression	Planning Area	Current

3rd	Feature Layer	User Defined Course of Action Shapes
Strategic Course of Action		
Placeholder		
Current Fire Situation		
Placeholder		
Desired Outcome		
Placeholder		
Strategic Comparison		
Placeholder		



comunities	Feature Layer	User Defined Course of Action Shapes
Strategic Course of Action		
lasdkjfhaksdjf		





sadjkfhaskjdf
Desired Outcome
lkasdjflaksd
Strategic Comparison
lsdkfhsajdfh
Strategic Constraints
dfjdkajsdhf
Cooperators/Stakeholders
askdjfhkajsd

08012024	Feature Layer	Planning Area
Strategic Course of Action		



The Alexander Mountain Fire will be managed utilizing a 100% full suppression strategy. Utilize sound risk management practices to develop a course of action that meets the incident objectives. A combination of direct, indirect, and point protection strategies will be utilized to protect threatened communities.

Current Fire Situation

The current fire situation is 5080 acres and growing. Fuels are dry and terrain is steep with limited access.

Desired Outcome

The Alexander Mountain Fire will be managed utilizing a 100% full suppression strategy. Utilize sound risk management practices to develop a course of action that meets the incident objectives. A combination of direct, indirect, and point protection strategies will be utilized to protect threatened communities.

Strategic Comparison

Through consideration of results of relative risk and org assessment, no other fire management options exist at this time and space.

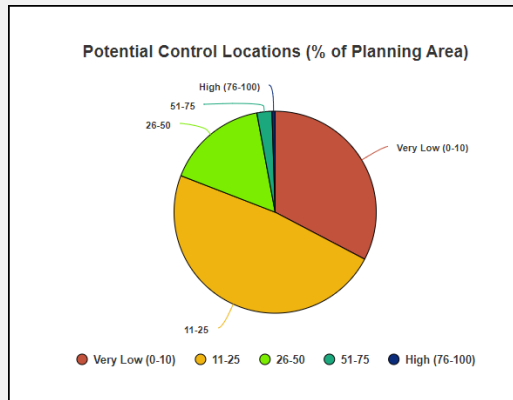
Cooperators/Stakeholders

The cooperators involved in sharing this decision process are Larimer County, And DFPC.



3. Relative Risk PMS-236 - Part B (Summary)

Probability	Time of Season
Rating	M
Time of Season Narrative	
Fire is in the middle 1/3 of the traditional fire season, however season ending events are coming later and later. Fire Danger ratings have been reporting as High. The seasonal severity is approaching the 90th percentile, however 2020 Cameron Peak Fire ERC's were below current values and fire activity was extreme. Continued hot and dry conditions are forecasted in the short term. Uh oh.	
Probability	Barriers to Fire Spread
Rating	M
Barriers to Fire Spread Narrative	



Potential barriers exist(prior footprints) to the north and west with communities to the east.

Probability

Seasonal Severity

Rating

M

Seasonal Severity Narrative

Fire Danger ratings have been reporting as High. The seasonal severity is approaching the 90th percentile, however 2020 Cameron Peak Fire ERC's were below current values and fire activity was extreme. Continued hot and dry conditions are forecasted in the short term.

Hazards

Fuel Conditions

Rating

M

Fuel Conditions Narrative



Fire is moving through moderate standing dead and down 1000 hour fuels (insect mortality) that are contributing to fire spread and long residence time. Current ERC's are exceeding 2020 values, a key indicator for extreme fire behavior.

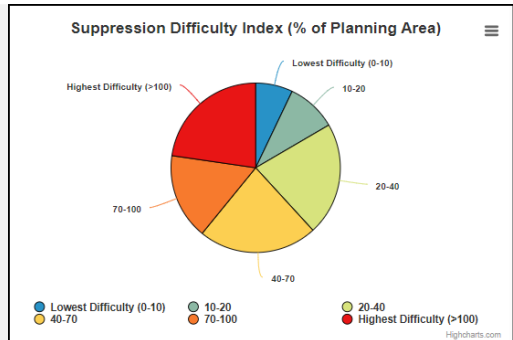
Editing would be bad here.

Hazards	Fire Behavior
Rating	M
Fire Behavior Narrative	

Fire is moving through moderate standing dead and down 1000 hour fuels (insect mortality) that are contributing to fire spread and long residence time. Current ERC's are exceeding 2020 values, a key indicator for extreme fire behavior.

Hazards	Potential Fire Growth
Rating	H
Potential Fire Growth Narrative	

Some fuels treatments have occurred in the area, however several units have not been completed(unburned hand piles) and there are recent fire footprints (Cameron Peak-2020 and Bobcat Ridge-2000) to the north/west of the fire. Spotting has been limited to less than 1/4 mile.

**Values****Infrastructure/Natural/CulturalConcerns****Rating****H****Infrastructure/Natural/CulturalConcerns Narrative**

Fire is moving through moderate standing dead and down 1000 hour fuels (insect mortality) that are contributing to fire spread and long residence time. Current ERC's are exceeding 2020 values, a key indicator for extreme fire behavior.

Editing would be bad here.

Values**Proximity & Threat to Fire Values****Rating****H****Proximity & Threat to Fire Values Narrative**

Several residential communities and supporting infrastructure are directly/imminently threatened. Northern water infrastructure is immediately threatened and is a large metropolitan domestic water source. Outside of structure protection the top three priorities from Larimer County are all infrastructure related - water,



fiber optic lines, high pressure gas lines. Fire is close and is currently impacting values at risk. Fire threatens multiple jurisdictions and has high socio/political interest.

Values	Social/Economic Concerns
Rating	H

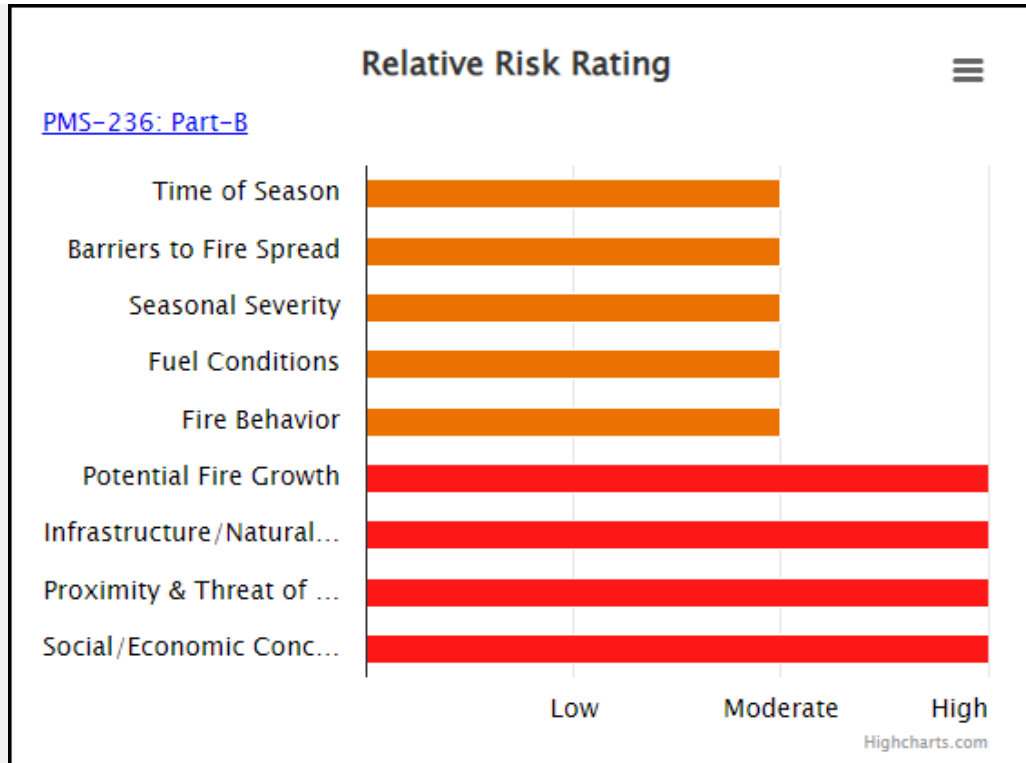
Social/Economic Concerns Narrative

Several residential communities and supporting infrastructure are directly/imminently threatened. Northern water infrastructure is immediately threatened and is a large metropolitan domestic water source. Outside of structure protection the top three priorities from Larimer County are all infrastructure related - water, fiber optic lines, high pressure gas lines. Fire is close and is currently impacting values at risk. Fire threatens multiple jurisdictions and has high socio/political interest.

Relative Risk Rating (Recommended)	Moderate
Relative Risk Rating (Selected)	High

Relative Risk Rating Narrative

Fire may be a long duration event. Complexity will dictate need for support from formalized Incident Management Teams staffing capabilities. Long term planning is necessary for a potential long duration incident. test text.





4. Strategic Assessment

Critical Values-at-Risk

Strategic Assessment Name	Feature Layer	Feature Name	Category	Risk Rating	Severity of Impact	Probability of Impact	At Risk Because of
Northern Water	User Defined Strategic Shapes	water	Protection Objective	Extremely High	Catastrophic	Almost Certain (FSPro 60-100%)	Potential Fire Behavior

Strategic Assessment Narrative – Critical Values at Risk

Strategic Assessment Name	Strategic Assessment Narrative
Northern Water	Protect water infrastructure of Northern Water that generally runs north/south to the east of the fire. Protect City of Loveland water supply and treatment plant at 3152 N County Road 29.



Highlighted Strategic Assessments

Strategic Assessment Name	Feature Layer	Feature Name	Category
OBJECTIVES FOR FIREFIGHTER AND PUBLIC SAFETY	Planning Area	Current	Safety Concern

Strategic Assessment Narrative – Highlighted

Strategic Assessment Name	Strategic Assessment Narrative
OBJECTIVES FOR FIREFIGHTER AND PUBLIC SAFETY	<p>Safety of incident responders and the public will be the highest priority. Manage the risk to incident responders and the public by utilizing a risk-based approach to decision making.</p> <p>Prior to actions being taken, ensure quality alternatives occur with Agency Administrators, partners, stakeholders and incident responders.</p> <p>Minimize the risk to the public through extensive public information and coordination with law enforcement for evacuations, evacuation planning, and closures.</p>




Strategic Assessment Name	Strategic Assessment Narrative												
	<div><p>Estimated Ground Evac Time (% of Planning Area)</p><table border="1"><thead><tr><th>Evacuation Time Range</th><th>Percentage of Planning Area</th></tr></thead><tbody><tr><td>0 to 1 hours</td><td>50%</td></tr><tr><td>1 to 2 hours</td><td>30%</td></tr><tr><td>2 to 4 hours</td><td>10%</td></tr><tr><td>4 to 6 hours</td><td>5%</td></tr><tr><td>More than 6 hours</td><td>5%</td></tr></tbody></table></div>	Evacuation Time Range	Percentage of Planning Area	0 to 1 hours	50%	1 to 2 hours	30%	2 to 4 hours	10%	4 to 6 hours	5%	More than 6 hours	5%
Evacuation Time Range	Percentage of Planning Area												
0 to 1 hours	50%												
1 to 2 hours	30%												
2 to 4 hours	10%												
4 to 6 hours	5%												
More than 6 hours	5%												

Other Strategic Assessments

Strategic Assessment Name	Feature Layer	Feature Name	Category
OBJECTIVES FOR INFORMATION AND RELATIONSHIPS	Planning Area	Current	Social/Economic Concern



Strategic Assessment Narrative – Other

Strategic Assessment Name	Strategic Assessment Narrative
OBJECTIVES FOR INFORMATION AND RELATIONSHIPS	<p>Maintain and enhance relationships with cooperators, stakeholders, the local community, and adjoining agencies through effective, honest, and timely communication, engagement, and information sharing.</p> <p>Ensure the public is properly informed of potential smoke impacts on the fire. Reduce risks to public safety by keeping the public and adjacent private land owners informed with up-to-date incident information. Consider trail, road or area closures, as appropriate, if fire growth occurs.</p> 



5. Estimated Final Incident Cost

Estimated Final Cost	Cost Estimation Method
\$12,000,000	Other
Cost Estimation Narrative	
SCI - Utilizing approximately \$3,900 per acre with a final estimated size of 20,000,000 acres. but this doesn't exist in WFDSS anymore... Incident cost is approximately \$970,000 per day for a forecasted 12 days remaining.	

IRWIN Estimated Cost to Date: N/A

Last IRWIN Reported Cost to Date

Source: N/A

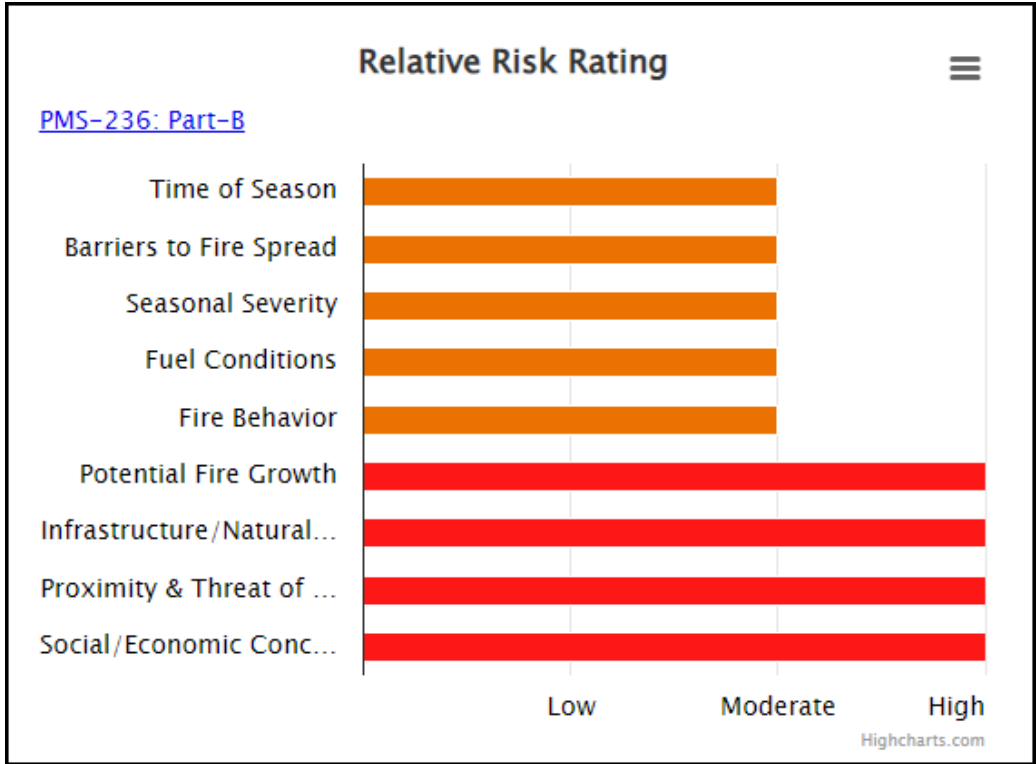
Date & Time: N/A



6. Organizational Assessment PMS-236 - Part C/D

Organizational Assessment Part C

Relative Risk Rating (Selected)	High
Relative Risk Rating Narrative	
<p>Fire may be a long duration event. Complexity will dictate need for support from formalized Incident Management Teams staffing capabilities. Long term planning is necessary for a potential long duration incident. test text.</p>	



Implementation Difficulty	Potential Fire Duration
Rating	High
Potential Fire Duration Narrative	

There is limited access to a significant portion of the fire due to remoteness and difficult terrain. Logistical support will be moderate to heavy. IMT support will help alleviate the local resource commitment to allow for the ongoing support of increased initial attack fires. The high functional concerns necessitates a full



incident management organizational structure to implement an appropriate course of action to minimize the fire duration. National PL5 is constraining resources to implement the course of action.

Implementation Difficulty	Incident Strategies (Course of Action)
Rating	High

Incident Strategies (Course of Action) Narrative

There is limited access to a significant portion of the fire due to remoteness and difficult terrain. Logistical support will be moderate to heavy. IMT support will help alleviate the local resource commitment to allow for the ongoing support of increased initial attack fires. The high functional concerns necessitates a full incident management organizational structure to implement an appropriate course of action to minimize the fire duration. National PL5 is constraining resources to implement the course of action.

Implementation Difficulty	Functional Concerns
Rating	High

Functional Concerns Narrative

There is limited access to a significant portion of the fire due to remoteness and difficult terrain. Logistical support will be moderate to heavy. IMT support will help alleviate the local resource commitment to allow for the ongoing support of increased initial attack fires. The high functional concerns necessitates a full incident management organizational structure to implement an appropriate course of action to minimize the fire duration. National PL5 is constraining resources to implement the course of action.

Socio/Political Concerns	Objective Concerns
--------------------------	--------------------



Rating	Moderate
Objective Concerns Narrative	
<p>A highly engaged and informed public exist within the Colorado Front Range is exacerbated by the 2020 Cameron Peak Fire. Colorado State Governor, state and federal legislators have visited with regional Forester and his staff, local T3 IMT to express concerns and support due to high visibility and values at risk. Local government organizations are engaged and have interest in the fire and potential outcomes.</p>	
Socio/Political Concerns	External Influences
Rating	High
External Influences Narrative	
<p>A highly engaged and informed public exist within the Colorado Front Range is exacerbated by the 2020 Cameron Peak Fire. Colorado State Governor, state and federal legislators have visited with regional Forester and his staff, local T3 IMT to express concerns and support due to high visibility and values at risk. Local government organizations are engaged and have interest in the fire and potential outcomes.</p>	
Socio/Political Concerns	Ownership Concerns
Rating	High
Ownership Concerns Narrative	



A highly engaged and informed public exist within the Colorado Front Range is exacerbated by the 2020 Cameron Peak Fire. Colorado State Governor, state and federal legislators have visited with regional Forester and his staff, local T3 IMT to express concerns and support due to high visibility and values at risk. Local government organizations are engaged and have interest in the fire and potential outcomes.

Recommended Organization**CIMT****Recommended Organization Description**

Majority of items rated as Moderate, with a few items rated as High. Use Part D: Functional Complexity to document the need to increase or reduce capacity/positions.

Unit Recommended Organization**CIMT****Unit Recommended Organization Narrative**

A CIMT has been ordered to address many of the issues identified in the decision and support the course of action. Functional concerns of this incident influence the successful implementation of identified objectives. CIMT order is filled on 7/29 PM and will in-brief 7/31 1800.

Organizational Assessment Part D**Functional Complexity****command****Rating****High****Command Narrative**



+1,000 residences threatened

Watershed and critical infrastructure threatened (Northern Water) for northern Colorado communities

Multiple community evacuations are occurring.

Highway 34 closed (main artery between Estes Park and Loveland, Colorado)

Functional Complexity **Planning**

Rating High

Planning Narrative

+1,000 residences threatened

Watershed and critical infrastructure threatened (Northern Water) for northern Colorado communities

Multiple community evacuations are occurring.

Highway 34 closed (main artery between Estes Park and Loveland, Colorado)

Functional Complexity **Operations**

Rating High

Operations Narrative



+1,000 residences threatened

Watershed and critical infrastructure threatened (Northern Water) for northern Colorado communities

Multiple community evacuations are occurring.

Highway 34 closed (main artery between Estes Park and Loveland, Colorado)

Functional Complexity

Finance

Rating

High

Finance Narrative

+1,000 residences threatened

Watershed and critical infrastructure threatened (Northern Water) for northern Colorado communities

Multiple community evacuations are occurring.

Highway 34 closed (main artery between Estes Park and Loveland, Colorado)

Functional Complexity

Logistics

Rating

High

Logistics Narrative



Remote, difficult to access

Growth potential of significant growth in next 2 burning periods

Multi-jurisdictional

Politically sensitive to Colorado Front Range Communities



7. Appendix A: Unit Fire Planning Information

Shape Name	Language Description
COARF	<p><p>Forest Wide Management Requirements:
</p>In ponderosa pine and Douglas-fir forests, manage existing old growth and mature forests to retain and encourage old-growth qualities. (LMRP, pg. 4)
Manage land treatments to conserve site moisture and to protect long-term stream health from damage by increase runoff. (LMRP, pg. 13)In the water influence zone next to perennial and intermittent streams, lakes, and wetlands, allow only those actions that maintain or improve long-term stream health and riparian ecosystem condition. (LMRP, pg. 13)Conduct actions so that stream pattern, geometry, and habitats are maintained or improved toward robust stream health. (LMRP, pg. 14)Manage land treatments to limit the sum of severely burned or detrimentally compacted, puddled, and displaced land to no more than 15 percent of any land unit. (LMRP, pg. 15)Protect from disturbance or mitigate disturbances of known paleontological resources to conserve scientific, educational, interpretive, and legacy values. (LMRP, pg. 16)Protect communities of special concern such as: talus slopes, caves, springs, seeps, wetlands, aquatic habitats, riparian habitats, shortgrass prairies, late-successional forests and alpine tundra (including the ecotone and sufficient buffer areas). (LMRP, pg. 17)Allow ecological processes where feasible at all temporal and spatial scales to proceed in a manner that contributes to sustainable wildland ecosystems. (LMRP, pg. 17)Limited timber cutting on unsuitable or tentatively suitable and not available lands, may occur for such purposes as salvage, protection or enhancement of biodiversity or wildlife habitat. (LMRP, pg. 20)</p>
Perimeter Control ARF	<p><p>Use firelines to confine the active zone of spreading fire. Fireline locations are selected to minimize the combined cost of suppression and values that could be lost in a fire.</p></p>
Prescription Control ARF	<p><p>Allow a fire to burn and consider it to be controlled as long as it burns within specified geographic areas and predetermined burning properties; it is generally the least intensive and least expensive response method.</p></p>
Direct Control ARF	<p><p>The immediate and complete extinction of the fire; it is the most intensive and most expensive suppression method, and places the values of improvements and resources above ecological values.</p></p>
Management Area 1.1	<p><p>Wilderness:
</p>The physical and biological attributes will be managed to allow natural processes to perpetuate the included ecosystems. (LMRP, pg. 332)Minimize human</p>



Shape Name	Language Description
	impacts in wilderness by considering implementing minimum-impact suppression tactics when managing wildland fires. (LMRP, pg. 334)
Management Area 3.5	<p>Forest Flora and Fauna Habitats: </p>Protect areas and communities that are providing important habitat components such as wintering areas, birthing areas (especially for calving, fawning, lambing and kidding), rearing areas, and migration routes. (LMRP, pg. 358)Manage and protect healthy forested and non-forested riparian areas to retain their value as quality habitats for terrestrial and aquatic wildlife. (LMRP, pg. 358)
Management Area 7.1	<p>National Forest - Residential Intermix: </p>Manage fire in close cooperation with state and county agencies, local fire protection districts and organized homeowner's groups. (LMRP, pg. 380)Aggressively suppress wildfires that threaten life and property. (LMRP, pg. 380)
Management Area 1.2	<p>Recommended for Wilderness: </p>Prohibit use of heavy ground-disturbing equipment for wildland fire management unless authorized by the Forest Supervisor. (LMRP, pg. 336)
Management Area 2.2	<p>Research Natural Areas: </p>Maintain natural (relatively pristine or pre-settlement) conditions by allowing ecological processes to prevail with minimal human intervention. (LMRP, pg. 345)